

PracticeWorks DeIDC Survey

PracticeWorks v7.0.17.233 or higher must be installed to process the ADA DeIDC Survey.

Setup

Click **"Start > All Programs (or Programs) > PracticeWorks > Configuration of PracticeWorks"**

Click **"Setup > General Configuration"**

Expand **"Integration"**

Expand **"DeIDC (non-USA only)"**

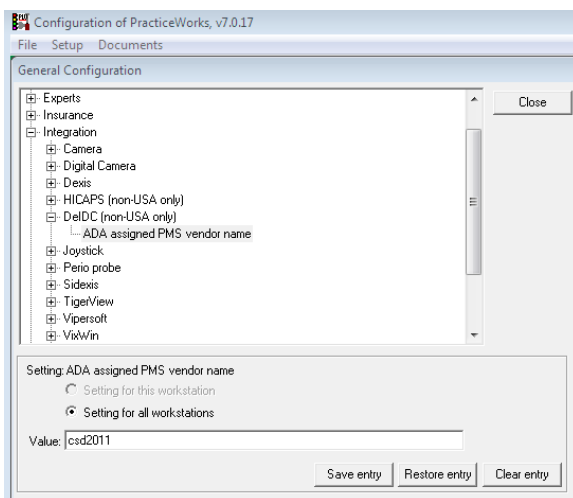
Select **"ADA assigned PMS vendor name"**

Enter **"csd2011"** in Value (ensuring lower-case letters are entered)

Click **"Save entry"**

Click **"Close"**

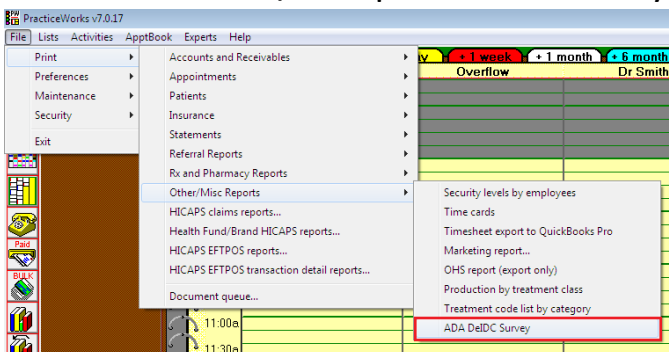
Click **"File > Exit"**



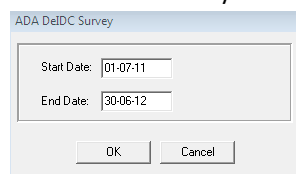
Submitting Survey

Open **PracticeWorks**

Click **"File > Print > Other/Misc Reports > ADA DeIDC Survey"**



Enter desired survey **Start and Finish Dates**



Click **"OK"**

The survey process now prepares and sends the survey data.

Tollfree (Aust) 1800 223 603
Tollfree (NZ) 0800 508 744
Tel +61 (2) 9919 4500
Fax +61 (2) 9919 4544